

BUILDING
MORE THAN
BUILDINGS®

Buffalo Urban Development Corporation

*Northland Corridor Redevelopment and Workforce
Training Center - Presentation for CM Services*

Gilbane



John LaRow LEED AP

Principal in Charge, Vice President

EXPERIENCE:

- > Principal in Charge UBSMBS
- > Upstate NY Business Unit VP
- > NYS Agency Experience
- > 22 Years Construction Experience

PROJECT HIGHLIGHTS

- > SUCF, University of Buffalo School of Medicine and Biomedical Sciences
- > NY State Capitol Roof Renovations
- > DASNY Lehman College New Science Building
- > GSA Massena United States Land Port of Entry



22
YEARS EXPERIENCE

Gilbane Building Company is a family-owned, global, comprehensive construction and facilities-related solutions firm.

50+ Offices servicing clients in over
12 countries

FAMILY-OWNED
with the active
involvement of



4th, 5th & 6th
generation Gilbanes

2,600
EMPLOYEES

FOUNDED IN
1873



OUR CORE VALUES



INTEGRITY



TOUGHMINDEDNESS



TEAMWORK



DEDICATION
TO EXCELLENCE



LOYALTY

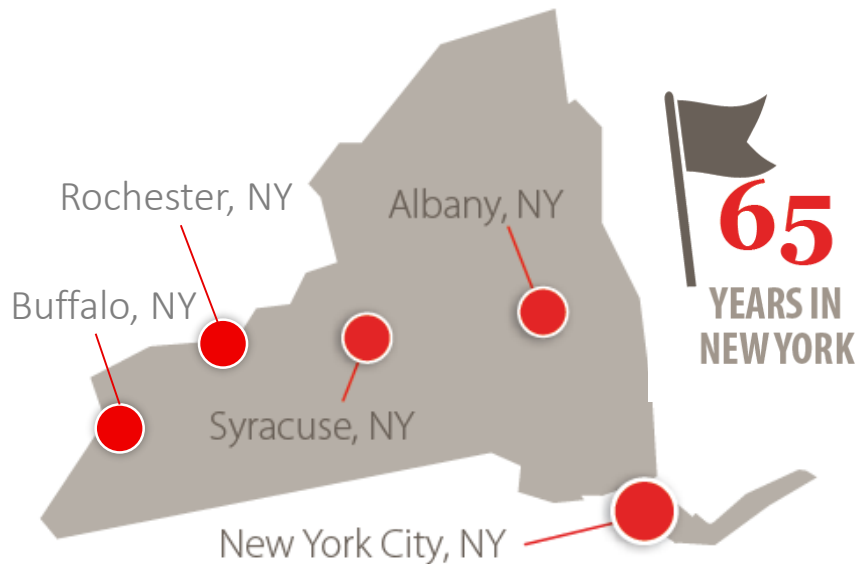


DISCIPLINE



CARING

NEW YORK



65
YEARS IN
NEW YORK

300+
NY STATE
STAFF

9.5
MILLION SF
Currently underway

74
PROJECTS
\$3.1
BILLION
in the last five years

Gilbane's Western NY Experience since 1979

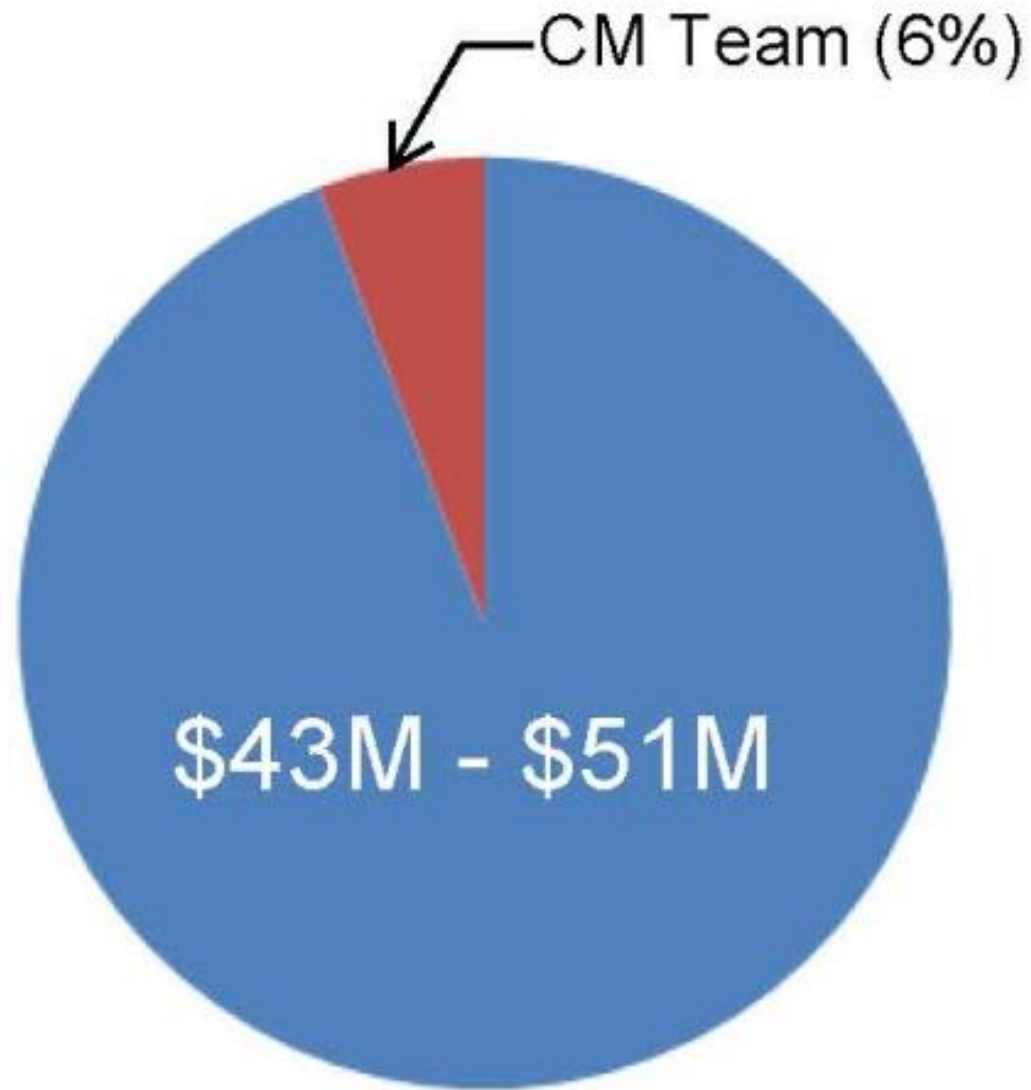
General Motors Engine Plant in Tonawanda

Marine Midland Bank

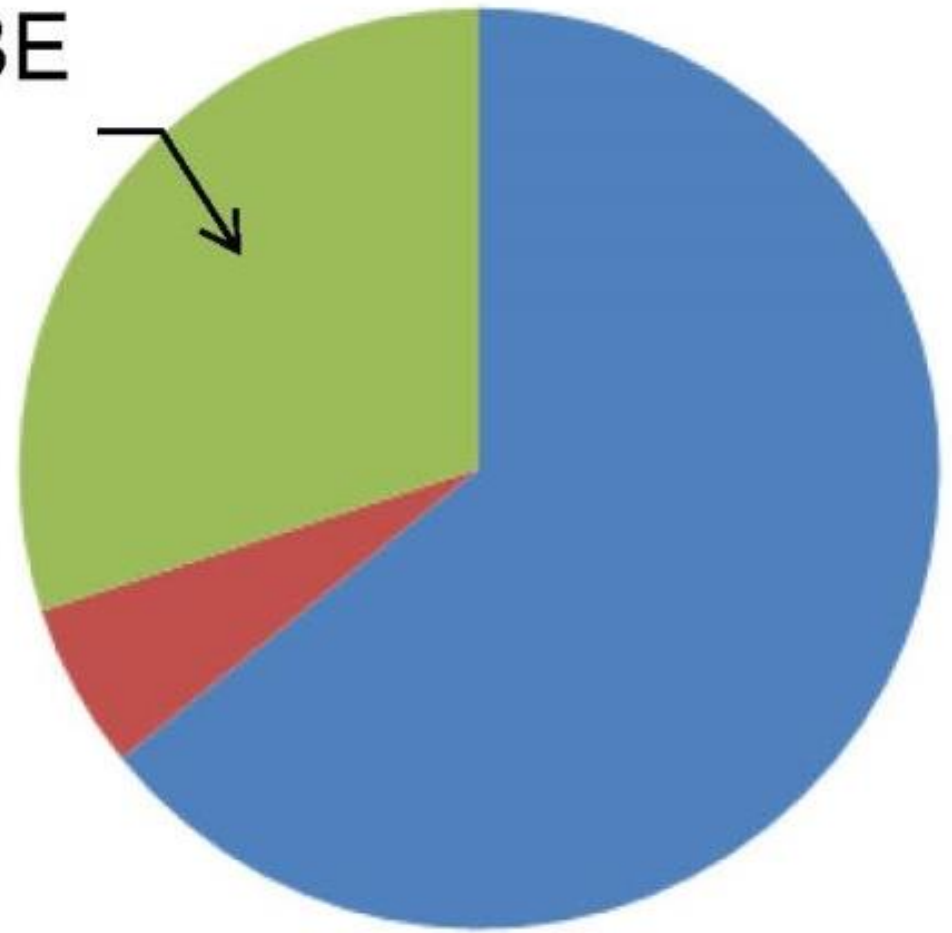
Federal Bureau of Prisons Immigration and Naturalization Service Facility

Verizon Communications D Tower Expansion

The University at Buffalo School of Medicine and Biomedical Sciences



Minimum 30% M/WBE
\$13.5M - \$16.5M



Northland Corridor Redevelopment Collaboration



An experienced and dedicated team



John LaRow
Principal in Charge
Gilbane Building Company



Thurman Thomas
Principal in Charge
3480 Group



Terry LoConte
Project Executive
Gilbane Building Company



Dolly Randle
Compliance & Outreach
CASNY

Terry LoConte

Project Executive

QUALIFICATIONS:

- > Began Construction Career in 1982
- > Joined Gilbane in 2013
- > BS/Construction Management/ Utica College
- > CCM Certified Construction Manager

LICENSES | CERTIFICATIONS:

- > OSHA 30 Hour Certification

COMMUNITY INVOLVEMENT

- > The Leukemia & Lymphoma Society

ROLE & RESPONSIBILITIES:

- > Manage the day-to-day activities of staff and operations



Thurman Thomas

President

QUALIFICATIONS:

- > President 3480 Group
- > Partner Legends Energy Group
- > Hall of Fame Running Back – Buffalo Bills

EXPERIENCE:

- > Began Construction Career in 2008
- > Oklahoma State University
- > Certified MBE Firm



Dolly Michelle Randle

President of CASNY

QUALIFICATIONS:

- > Bryant and Stratton College, Graduated 1990
Major: Data Processing/ Minor: Accounting
- > President at Compliance & Administrative Services of NY
- > New York State Certified MBE & WBE

EXPERIENCE:

- > Compliance Monitor on the Tower at Midtown Project in Rochester, New York
- > Phase V of the Buffalo Public Schools Project in Buffalo, New York
- > OSHA 10 Certification



CASNY Outreach and Compliance

Gilbane is fully committed to achieving the 30% MWBE goals outlined in the RFP and have already achieved our 30% goal with the addition of our MWBE partners. Gilbane and CASNY will monitor contractors' compliance with the diversity plan, and will report on and address any instance of violations of the policies, procedures, and standards.

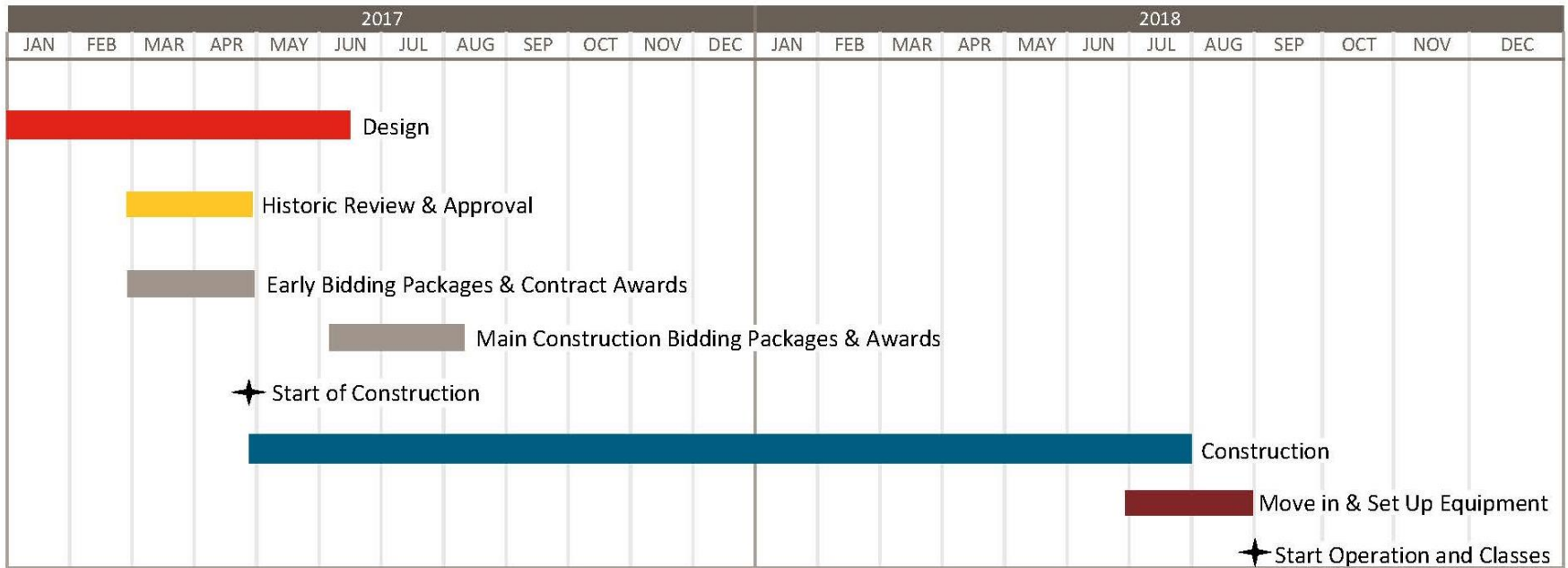
BUSINESS UTILIZATION

- Assisting small businesses to become a certified MWBE
- Outreach sessions for certified MWBE's
- Matchmaker sessions for Primes and MWBE's
- Assisting individuals to start and grow their businesses

WORKFORCE UTILIZATION

- Matchmaker sessions with skilled and qualified workers to meet with the Primes and MWBE companies
- Assistance with entry into training facilities for individuals
- OSHA 10 training opportunities

Northland Corridor Redevelopment Corporation Workforce Training Center



Northland Corridor Redevelopment Corporation Workforce Training Center

