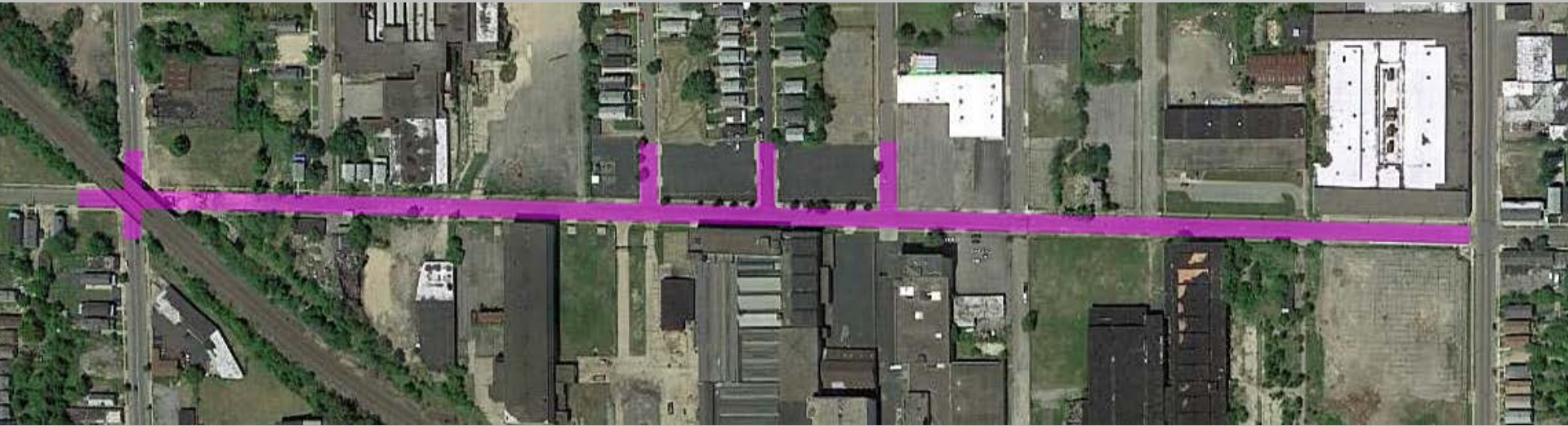


Northland Avenue – Roadway Rehabilitation / Streetscape

Project Overview

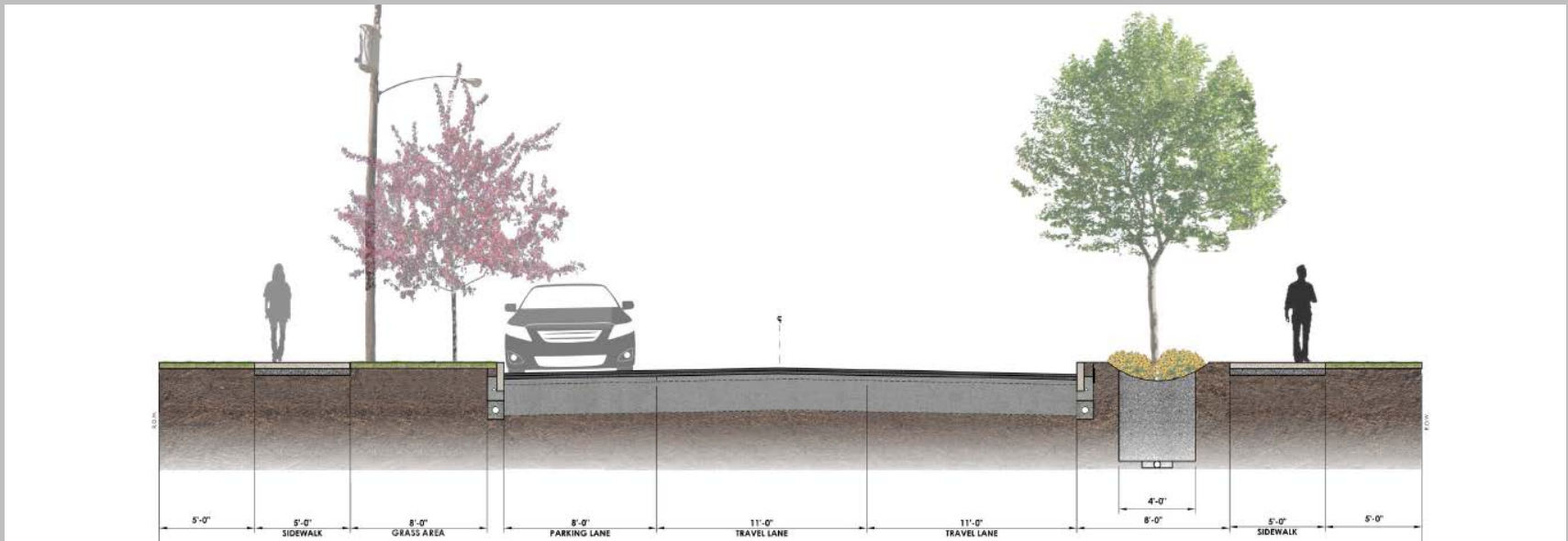
- Deep mill and overlay
- New Curb and Sidewalk
- New Landscape
- Traffic Signal Upgrades
- Utility Modifications
- Green Infrastructure
- Public Art



Northland Avenue – Roadway Rehabilitation / Streetscape

Project Overview

- Pavement to remain 30-ft. wide
 - Two 11-ft. wide lanes
 - One 8-ft. wide parking lane on north side
- New granite curb and new 5-ft. wide sidewalk
- Landscape area between curb and sidewalk widened to 8-ft.
 - Dead or dying trees removed and replaced with new trees
 - Trees in good health to be protected



Northland Avenue – Roadway Rehabilitation / Streetscape

Traffic Calming Improvements

- Proposed bumpouts at Chelsea, Longview, and Schauf
- New signal at Schauf



Northland Avenue – Roadway Rehabilitation / Streetscape

Utility Modifications

- Utility Poles
 - Poles will remain on north side
 - New wood poles to be placed 7-ft. from new curb
 - Existing poles will be removed
 - New lighting will be installed on new poles



Northland Avenue – Roadway Rehabilitation / Streetscape

Green Infrastructure

- Large currently undeveloped area at 577 Northland, near Fillmore, to be repurposed
 - Rain and other surface water will drain towards property
 - Water will be treated using bioswales
 - Trees, landscaping, and pathway may be added



Northland Avenue – Roadway Rehabilitation / Streetscape

Public Art

- Public Art will be included within 577 Northland property or elsewhere on the corridor



Northland Avenue – Roadway Rehabilitation / Streetscape

Schedule

- Begin utility relocations – early 2017
- Project bid – late March 2017
- Project award and construction start – Spring 2017
- Project completion late 2017 or early 2018

Costs

- Overall – \$3.5M - \$4.5M



Northland Avenue – Roadway Rehabilitation / Streetscape

Impacts to Community – During Construction

- City approved Construction Inspector will be available either on site or by phone 24-hours/day
- Some enhancements will require rock excavation; rock blasting is not anticipated
- Intermittent disruptions in utility services; customers to be notified in advance
- Short duration street closures possible during utility trenching operations
- Driveways and sidewalks will be closed while concrete is being placed
- Road closure by segments may be utilized to speed up construction; open to local traffic only

Impacts to Community – Post-Construction

- New roadway and sidewalk will enhance corridor
- New traffic signal at Schauf may help to calm traffic
- Utility pole relocation away from edge of roadway may help reduce accidents

